



VISIONAPARTMENTS

Worldwide

BUSINESS AREA

ROUTE DE VALLAIRE 2, ST-SULPICE



MEETING ROOM & SHARED OFFICES

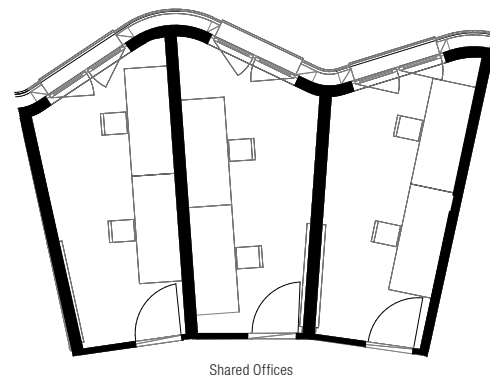
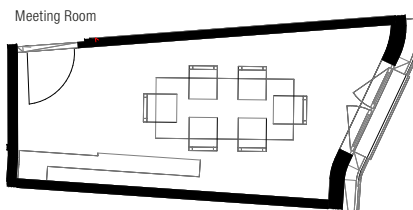
ROOM	CAPACITY	HALF DAY	FULL DAY
Shared Office (Single Entrance)	1 person (not exclusively)	CHF 25	CHF 35
Meeting Room	4 m ² / 6 pers.	CHF 80	CHF 120
Meeting Room Exclusive (Meeting Room + Shared Offices)	4 + 2,5 + 2,5 + 2,5 m ² / 12 pers.	CHF 100	CHF 150

Rooms can only be rented in Exclusivity on weekdays (Monday-Friday).

PACKAGE	AMENITIES INCLUDED	HALF DAY / PERSON	FULL DAY / PERSON
1. Relaxing Break	Office supplies + Water/Coffee/Tea	CHF 8	CHF 14
2. Sweet Break	Package 1 + Croissants/Fruits	CHF 14	CHF 19
3. Savory Break	Package 1 + Savory Spreads + Bread	CHF 19	CHF 25

Room includes: TV, flipchart/whiteboard, markers, free unlimited internet access. Other necessary technical facilities can be rented additionally. **All prices including VAT.**

VISIONAPARTMENTS Saint-Sulpice, located near Lake Geneva and the EPFL (Lausanne Federal Polytechnic), features 60 apartments, lobby area, shared office and a meeting room, laundry facilities and parking.



CONTACT

Vision Lausanne S.A.
 Route de Vallaire 2
 CH-1025 Saint Sulpice
 T +41 21 323 96 19
lausanne@visionapartments.com
visionapartments.com



Follow us on Social Media
 @VISIONAPARTMENTS